



Centripetal focusing of gyrotactic phytoplankton



M. Cencini^a, M. Franchino^b, F. Santamaria^c, G. Boffetta^{c,*}

^a Institute of Complex Systems-CNR, via dei Taurini 19, 00185 Rome, Italy

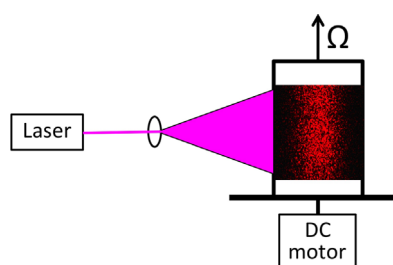
^b Department of Life Sciences and Systems Biology, University of Torino, via Accademia Albertina 13, 10123 Torino, Italy

^c Department of Physics and INFN, University of Torino, via P.Giuria 1, 10125 Torino, Italy

HIGHLIGHTS

- A suspension of gyrotactic cells is placed in a flow in uniform rotation.
- Swimming cells are observed to accumulate around the axis of rotation.
- A stochastic model for gyrotactic swimmers is introduced and studied.
- Analytical solutions of the model reproduce the experimental cell distributions.
- Numerical simulations give quantitative agreement with the observed dynamics.

GRAPHICAL ABSTRACT



ARTICLE INFO

Article history:

Received 12 November 2015

Received in revised form

14 March 2016

Accepted 25 March 2016

Available online 7 April 2016

Keywords:

Microorganism motility

Gyrotaxis

Fluid-flow motility interaction

ABSTRACT

A suspension of gyrotactic microalgae *Chlamydomonas augustae* swimming in a cylindrical water vessel in solid-body rotation is studied. Our experiments show that swimming algae form an aggregate around the axis of rotation, whose intensity increases with the rotation speed. We explain this phenomenon by the centripetal orientation of the swimming direction towards the axis of rotation. This *centripetal focusing* is contrasted by diffusive fluxes due to stochastic reorientation of the cells. The competition of the two effects lead to a stationary distribution, which we analytically derive from a refined mathematical model of gyrotactic swimmers. The temporal evolution of the cell distribution, obtained via numerical simulations of the stochastic model, is in quantitative agreement with the experimental measurements in the range of parameters explored.

© 2016 Published by Elsevier Ltd.

1. Introduction

Many phytoplankton species are able to swim and their motility affects several basic processes in their life and ecology (Smayda, 1997; Reynolds, 2006; Kiørboe, 2008; Elgeti et al., 2015). Swimming allows phytoplankton to explore the water column, moving from the well-lit surface layers during the day to the nutrients-rich deeper layers at night (Lieberman et al., 1994; Cullen, 1985) (see also Bollens et al., 2011 and references therein). In order to perform this vertical migration, many phytoplankton cells are

guided by an orienting mechanism when swimming. One of the simplest mechanism leading to orientation in the vertical direction is bottom-heaviness (Wager, 1910). The unbalanced distribution of mass inside the cell induces a mechanical torque, due to gravity and buoyancy forces, which orients the cell in the direction opposite to gravity. This torque competes with the viscous torque, due to the hydrodynamic shear, which tends to rotate the cell. When the swimming direction results from the balance between these two torques, the organism is said to be *gyrotactic* (Kessler, 1985; Pedley and Kessler, 1987, 1992).

Gyrotaxis generates remarkable spatial distributions of swimming cells. In laminar conditions, it produces beam-like accumulations in vertical pipe flows (Kessler, 1985) and concentrated thin layers in horizontal shear flows (Durham et al., 2009). In general,

* Corresponding author.

E-mail address: guido.boffetta@unito.it (G. Boffetta).

it has been shown that the interplay between motility and fluid motion can generate small scale clustering (Torney and Neufeld, 2007, 2008). In particular, gyrotactic motility has been recently shown, by theoretical analysis and numerical simulations, to induce intense small-scale fractal clustering in turbulent flows (Durham et al., 2013; Zhan et al., 2014; Fouxon and Leshansky, 2015; Gustavsson et al.), providing a mechanisms for the micro-patchiness observed in motile phytoplankton (Malkiel et al., 1999). Turbulence is characterized by extreme fluctuations of fluid acceleration, which can locally exceed gravity even at moderate Reynolds numbers (La Porta et al., 2001). The origin of these fluctuations has been traced back to small-scale vortices generating intense centripetal accelerations (Biferale et al., 2005). For applications in turbulent flow, the gyrotactic model has been recently modified to take into account the effect of fluid acceleration in the mechanical torque (De Lillo et al., 2013). Remarkably, numerical simulations of turbulent flows have shown that the effect of fluid acceleration is to enhance the patchiness of gyrotactic phytoplankton by gathering cells into small-scale vortices (De Lillo et al., 2014).

In this work, we study experimentally, analytically and numerically the behavior of gyrotactic swimming cells in a controlled environment of uniform vorticity – i.e. a cylindrical water vessel in solid-body rotation. We observe that phytoplankton cells, initially uniformly distributed in the container, aggregate towards the axis of rotation eventually reaching a stationary, Gaussian-like distribution. We show analytically and by means of numerical simulations that a stochastic formulation of the refined gyrotactic model, which takes into account the fluctuations of the swimming direction (see (De Lillo et al., 2013) and also (De Lillo et al., 2014) where preliminary qualitative results of the experiment were reported), quantitatively explains the time evolution of cell accumulation toward the rotation axis and the asymptotic accumulation at different rotation frequency.

The remaining of the paper is organized as follows. In Section 2 we introduce the experimental method, the theoretical model, the different analytical techniques and the numerical method. In Section 3 we discuss the data analysis and we compare the experimental results with the theoretical and numerical predictions. Finally, Section 4 is devoted to conclusions. Technical details on the analytical computations are presented in the Appendices.

2. Methods

2.1. Laboratory experiments

We performed laboratory experiments using cultures of the unicellular freshwater flagellate strain of Chlorophyceae, *Chlamydomonas augustae*. *C. augustae* is inoculated in 250 ml Erlenmeyer flasks containing 200 ml of liquid Z medium (Andersen, 2005). Cultures are kept at constant temperature of 25 °C under artificial illumination provided by fluorescent light producing about 2000 lux with a 16:8 h light:dark cycle. Culture growth is estimated by measuring the dry biomass concentration and the number of cells. Samples for dry weight (dw) calculation are taken in triplicate and a gravimetric determination is performed (Chini Zittelli et al., 2000). Triplicate cell counts are carried out for each sample by loading 0.01 ml of sample on a Thoma's counting chamber and the averaged value was determined. Cell counts are performed by using a hemocytometer. Experiments are realized about 3 weeks after inoculation of the culture and after dilution into fresh medium to reach a concentration of $\approx 5 \times 10^4$ cell/ml to avoid collective phenomena.

The experimental setup is sketched in Fig. 1. A suspension of

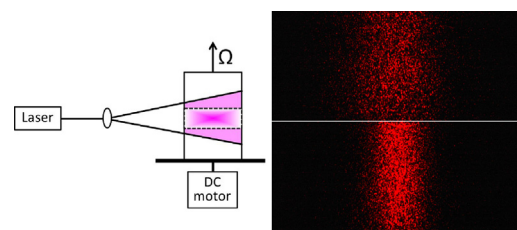


Fig. 1. Sketch of the experimental setup. The cylindrical vessel filled with a suspension of *C. augustae* is placed over a table rotating with angular velocity $\Omega = 2\pi f$. A blue laser (power 100 mW, wavelength $\lambda = 450$ nm) vertical sheet, generated by a cylindrical lens, is directed in the central plane of the vessel. Fluorescent images of cells are acquired by a Nikon CCD camera at resolution 3000×2000 pixels with a low-pass red filter at 600 nm. The rectangular area represents the measurement region. The pictures on the right are two examples of the images (central part) taken by the camera at the time $t = 600$ s for $f = 5$ Hz (top) and $f = 8$ Hz (bottom).

gyrotactic cells is placed in a small cylindrical vessel of inner radius $R = 18$ mm and height $H = 57$ mm over a plate that rotates at angular velocity Ω , digitally controlled. After a short spin-up time of order $R/(\nu\Omega)^{1/2}$ (ν is the kinematic viscosity of water) the fluid in the vessel reaches the solid-body rotation regime (Greenspan and Howard, 1963), at which we defines the reference zero time for the experiment. We remark that this regime is reached after a series of physical processes characterized by complex secondary flows. Nonetheless, this initial transient is negligible since the spin-up time for our vessel is of the order of few seconds and the displacement of the swimming cells in this transient is very small.

All these preparatory processes are performed in darkness or with a low power red light at wavelength 655 nm not seen by algae (Harris, 2009). At time $t=0$ and every Δt (typically $\Delta t = 15$ s) a blue laser sheet (power 100 mW, wavelength $\lambda = 450$ nm) from one side of the vessel is turned on for less than one second and a picture of the vessel is taken by the camera and acquired by the computer. Each experiment, for a specific value of Ω , lasts for 15 min after which the plate is stopped and the culture is homogenized. Control experiments are performed in similar conditions by using a suspension of cells killed with a solution of 8% v/v ethanol. The frequency of rotation $f = \Omega/(2\pi)$ ranges between 4 Hz and 8 Hz, corresponding to a centripetal acceleration $a_c = \Omega^2 R$ at the border of the vessel between 11 m/s² and 45 m/s², in all cases larger than the gravitational acceleration.

The laser sheet induces fluorescence of the *C. augustae* cells whose emission spectrum has a peak around 685 nm (determined by a spectrophotometer) (Harris, 2009). Fluorescence images are taken by a digital camera (resolution 3000×2000 pixels) with a red filter (B+W 091 Dark Red) which cuts all wavelengths below 600 nm. Samples of the fluorescence images are shown in Fig. 1. Calibration of the images with the cell density is performed by taking pictures of homogeneous suspension (not in rotation) with known concentrations (determined by a hemocytometer). Images of the vessel filled with distilled water are used to define the background noise (due to background light and CCD noise) which is averaged over realizations and space and removed from the experimental images. An additional source of noise in the images is due to the presence of non-motile cells and impurities in the solution. These produce a non-zero background in the images and therefore a measured cell density which never vanishes (i.e. the dark regions of the images in Fig. 1 are never really “black”). We will need to take into account of this background contribution when comparing our experimental results with the theory. Spatial calibration is performed by a micrometric pattern inside the vessel filled with water, which is also used to compensate the optical deformation induced by the cylindrical surface of the vessel.

Images acquired by the camera at different times are used to measure the evolution of the radial density $n_{exp}(r, t)$ of algae, after

averaging over the vertical direction. In principle, at very long times, cells can accumulate toward the top of the vessel. However, on the timescale of the experiment we do not observe significant dependence of the local density on the vertical coordinate. The radial density is computed over a portion of the image of height $h = 30$ mm and width $2R_v = 24$ mm centered at the cylinder axis. We limit the acquisition to $R_v < R$ in order to reduce optical deformations and possible wall effects.

2.2. Mathematical models

The mathematical model for gyrotactic algae was introduced by Kessler (1985), Pedley and Kessler (1987, 1990), on the basis of the observation that bottom-heavy swimming micro-organisms focus in the center of a pipe when the fluid flows downwards. The swimming direction results from the competition between gravity-buoyant torque, due to bottom-heaviness, and the shear-induced viscous torque. Recently, the model has been extended to include the acceleration induced by the fluid flow (De Lillo et al., 2013, 2014), an effect which can be important in turbulence (La Porta et al., 2001).

Due to the small size (~ 10 μm) and the small density mismatch with the fluid (less than 5%), cells are represented as point-like, spherical and neutrally buoyant particles (for a recent refined analysis see Ref. (O'Malley and Bees, 2012)) transported by the fluid velocity $\mathbf{u}(\mathbf{x}, t)$ at cell position \mathbf{x} with a superimposed swimming velocity \mathbf{v}_s

$$\dot{\mathbf{x}} = \mathbf{u} + v_s \mathbf{p}. \quad (1)$$

The magnitude of the swimming velocity, v_s , is assumed constant, while the swimming direction \mathbf{p} evolves as

$$\dot{\mathbf{p}} = -\frac{1}{2v_0}[\mathbf{A} - (\mathbf{A} \cdot \mathbf{p})\mathbf{p}] + \frac{1}{2}\boldsymbol{\omega} \times \mathbf{p} + \Gamma_r. \quad (2)$$

The first term describes the orientation towards the direction opposite to the acceleration \mathbf{A} in the cell reference of frame with characteristic speed $v_0 = 3\nu/\delta$ (δ is the cell center-of-mass displacement relative to the geometrical center and ν the fluid kinematic viscosity). In the original model only gravity is taken into account and $\mathbf{A} = \mathbf{g}$. Here, following (De Lillo et al., 2013, 2014), we consider the total acceleration, due to gravity and fluid acceleration $\mathbf{a} = d\mathbf{u}/dt$ (acceleration due to swimming is neglected), so that $\mathbf{A} = \mathbf{g} - \mathbf{a}$. The second term in the rhs of (2) represents cell rotation due to the local vorticity $\boldsymbol{\omega} = \nabla \times \mathbf{u}$. The last term Γ_r represents rotational diffusion in the swimming directions, which phenomenologically models the intrinsic stochasticity in the swimming behavior (Hill and Häder, 1997).

We emphasize the simplicity of the above model that neglects many details, including the unsteadiness of swimming due to flagella beating, deviations from spherical shape, cell-cell interactions and the feedback of cell motion on the surrounding fluid.

2.3. Deterministic motion in solid body rotation

We study analytically and numerically the motion of gyrotactic swimmers in the velocity field generated by the solid body rotation of the cylinder along its vertical axis: $\mathbf{u} = (-\Omega y, \Omega x, 0)$. Vorticity is parallel to gravity, $\boldsymbol{\omega} = \nabla \times \mathbf{u} = (0, 0, 2\Omega)$, and the (centripetal) acceleration $\mathbf{a} = (-\Omega^2 x, -\Omega^2 y, 0)$ is orthogonal to gravity $\mathbf{g} = (0, 0, -g)$.

We start by considering the dynamics in the absence of stochastic terms (i.e. $\Gamma_r = 0$ in (2)) whose effects will be discussed in the following section. In this limit it is possible to derive analytically the motion of swimming cells and show that they accumulate exponentially in time on the axis of rotation.

By introducing cylindrical coordinates with $\mathbf{x} = (\mathbf{r}, z)$ and

$\mathbf{p} = (p_r, p_z)$, such that $\mathbf{A} = (\Omega^2 \mathbf{r}, -g)$ and $\mathbf{u} = (\Omega \mathbf{r}^\perp, 0)$ (with $\mathbf{r}^\perp = (-y, x)$), Eqs. (1) and (2) become

$$\dot{\mathbf{r}} = \Omega \mathbf{r}^\perp + v_s \mathbf{p}_r \quad (3)$$

$$\dot{z} = v_s p_z \quad (4)$$

$$\dot{p}_r = -\frac{1}{2B}[\gamma \mathbf{r} + p_z \mathbf{p}_r - \gamma(\mathbf{r} \cdot \mathbf{p}_r)\mathbf{p}_r] + \Omega \mathbf{p}_r^\perp \quad (5)$$

$$\dot{p}_z = \frac{1}{2B}[1 - p_z^2 + \gamma(\mathbf{r} \cdot \mathbf{p}_r)p_z] \quad (6)$$

where $\mathbf{p}_r^\perp = (-p_y, p_x)$. The two parameters $B \equiv v_0/g$ and $1/\gamma \equiv g/\Omega^2$ represents the characteristic time of reorientation under gravity and the radial distance at which fluid and gravitational acceleration are equal.

A solution of the above equations can be obtained under the hypothesis of local equilibrium in the swimming direction, i.e. by assuming $\dot{\mathbf{p}} = 0$ locally. Physically this requires that the characteristic orientation time B is faster than the typical displacement time. Within this approximation one can show (see Appendix A) that the equilibrium swimming direction \mathbf{p}^{eq} is simply opposite to the total acceleration, $-\mathbf{A}$, i.e.

$$\mathbf{p}^{eq} = \frac{\mathbf{a} - \mathbf{g}}{|\mathbf{a} - \mathbf{g}|} = \left(\frac{-\gamma \mathbf{r}}{\sqrt{1 + (\gamma r)^2}}, \frac{1}{\sqrt{1 + (\gamma r)^2}} \right). \quad (7)$$

When $\gamma r \ll 1$, the distance from the axis evolves as $\dot{r} = -\gamma v_s r$ implying that cells position moves exponentially towards the rotation axis $r=0$:

$$r(t) = r(0)e^{-\gamma v_s t}. \quad (8)$$

For general values of γr the time evolution of $r(t)$ is more complicated but asymptotically the above results remain valid (see Appendix A for details).

2.4. Stationary distribution in presence of rotational diffusivity

The deterministic model predicts that swimming cells should converge on the rotation axis. In reality, stochastic reorientation of the swimming direction, due to different biological behaviors, causes the cells to weakly deviate from the convergent trajectories predicted by (8), preventing the population from collapsing onto the rotation axis and eventually producing accumulation in a finite volume.

Because we are considering stochastic effects, which can be conveniently modeled as rotational diffusivity (Hill and Häder, 1997; Pedley and Kessler, 1992), in the following we will not discuss individual trajectories, rather we shall focus on the cell density $n(\mathbf{x}, t)$ which can be directly compared with the experimental measurements. We report here the basic ingredients and results of our approach, which is based on the so-called Generalized Taylor Dispersion theory (Frankel and Brenner, 1989), applied to gyrotactic phytoplankton (Beaton et al., 2011, 2012). The interested reader can find details of this approach in references Hill and Bees (2002), Manela and Frankel (2003), and Beaton et al. (2011, 2012) (see also Appendix B).

We introduce the probability density function $\mathcal{P}(\mathbf{x}, \mathbf{p}, t)$ to find a cell at position \mathbf{x} swimming in direction \mathbf{p} . The evolution of \mathcal{P} is ruled by the Fokker-Planck equation

$$\partial_t \mathcal{P} + \nabla_{\mathbf{x}} \cdot (\dot{\mathbf{x}} \mathcal{P}) + \nabla_{\mathbf{p}} \cdot (\dot{\mathbf{p}} \mathcal{P} - d_r \nabla_{\mathbf{p}} \mathcal{P}) = 0, \quad (9)$$

where $\dot{\mathbf{x}}$ and $\dot{\mathbf{p}}$ are given by (1) and (2) and d_r is the rotational diffusivity coefficient (Pedley and Kessler, 1990, 1992). The quantity we are interested in is the population density, $n(\mathbf{x}, t) = \int d\mathbf{p} \mathcal{P}(\mathbf{x}, \mathbf{p}, t)$. Essentially, we seek for an effective evolution equation for the population density in terms of the advection–diffusion equation (Pedley and Kessler, 1990, 1992; Bees et al., 1998; Hill and Bees, 2002; Manela and Frankel, 2003; Bearon et al., 2011, 2012)

$$\partial_t n + \nabla_{\mathbf{x}} \cdot (\mathbf{V}n - \mathbb{D} \nabla_{\mathbf{x}} n) = 0, \quad (10)$$

where \mathbf{V} and \mathbb{D} are the effective drift and diffusivity tensor, respectively.

The main idea for going from (9) and (10) is to assume that the orientation dynamics is the fastest process. Consequently, we can treat \mathbf{p} as a random unit vector with probability density function $f(\mathbf{p})$ given by the stationary solution of the Fokker–Planck equation $\partial_t f + \nabla_{\mathbf{p}} \cdot (\dot{\mathbf{p}}f - d_r \nabla_{\mathbf{p}} f) = 0$ (Pedley and Kessler, 1990, 1992; Bees et al., 1998). Within this approximation, on timescales longer than $1/d_r$, we have that the effective drift becomes $\mathbf{V} = \mathbf{u} + v_s \langle \mathbf{p} \rangle = \mathbf{u} + v_s \int d\mathbf{p} \mathbf{p} f(\mathbf{p})$. The derivation of the diffusivity tensor is more complicated (see Appendix B for details) and is based on the so-called Generalized Taylor dispersion theory, which has been originally used to derive \mathbb{D} for gyrotactic swimmers in homogeneous shear flow (Hill and Bees, 2002; Manela and Frankel, 2003). The basic idea of the method (see supplements of (Bearon et al., 2011) for a clear explanation of the method) is to exploit again the separation of time scales between orientational and positional dynamics to compute the second (spatial) moments of the distribution $\mathcal{P}(\mathbf{x}, \mathbf{p}, t)$ averaged over the cell orientation, the latter defines the diffusion tensor describing the evolution of the population density $n(\mathbf{x}, t)$. The method can be extended to inhomogeneous shears, for which the mean cell orientation can depend on the position, provided that the relaxation in the swimming direction is sufficiently fast (Bearon et al., 2011). We are here in a similar situation: the equilibrium orientation direction depends on the distance from the axis, according to (7). We therefore assume that, at each distance r , the distribution of orientations relaxes to a stationary distribution which parametrically depends on r . Within this adiabatic approximation, exploiting previous computation done in the case in which only gravity is acting (Bearon et al., 2011, 2012), we are able to obtain explicit expressions for the drift coefficient and the diffusivity tensor.

Once $\mathbf{V}(r)$ and $\mathbb{D}(r)$ are known, we can solve (10) at stationarity, i.e. when centripetal flux, controlled by swimming, is balanced by the diffusive (centrifugal) flux due to random reorientation. The main analytical result of our analysis is the explicit expression of the stationary radial population density which, for $(\gamma r) \ll 1$, takes the Gaussian form (see Appendix B for details)

$$n_s(r) = N \exp\left(-\frac{\gamma r^2}{2v_s B F_3^2(\lambda)}\right) \quad (11)$$

where $F_3(\lambda)$ a dimensionless function of the parameter $\lambda = 1/(2Bd_r)$, and the coefficient N can be written in terms of the total number of cells N_s as $N = N_s \gamma / (2\pi H v_s B F_3^2(\lambda))$.

From the distribution (11) we obtain the average distance of the population from the cylinder axis in stationary conditions which reads

$$\langle r \rangle_s \equiv \frac{\int_0^R r n_s(r) dr}{\int_0^R n_s(r) dr} = \sqrt{\frac{2}{\pi}} \left(\frac{v_s B}{\gamma} \right)^{1/2} F_3(\lambda), \quad (12)$$

where the subleading contribution from the upper integration extreme R has been neglected.

2.5. Population evolution: Numerical simulations

The temporal evolution of the cell density cannot in general be obtained analytically. Therefore, in order to compare the model with the experimental measurements, we performed a Monte Carlo simulations of (9) directly simulating stochastic trajectories from Eqs. (3), (5), (6) using a Runge–Kutta fourth order scheme (the vertical dynamics (4) is not needed as we are interested in the radial distribution). The cell's parameters v_s , B and d_r are chosen, among the typical values given in literature, in order to have a good fit of the stationary distribution, as described below. The parameter $\gamma = \Omega^2/g$ is varied according to the experimental rotation frequency, with $g = 9.8 \text{ m/s}^2$.

The simulation is initialized placing $N_s = 10^5$ cells randomly in a circle of radius $R = 18 \text{ mm}$ with random swimming orientations uniformly distributed on the unit sphere. We use a time step of 10^{-3} s and store the position and velocities of the cells every 15 s , as in the experiment. From the stored position we can reconstruct the cell density and other observable. In particular, we will be interested in the evolution of the average radial distance $\langle r(t) \rangle = \int dr n(r, t) r / \int dr n(r, t)$.

3. Data analysis and results

In this section we compare the predictions of the mathematical model presented in Methods with the outcome of the experiments. The analytical theory of Section 2.4 provides an explicit expression for the radial population density $n_s(r)$ at equilibrium, while the time evolution of the density is obtained by stochastic simulations of (9).

As discussed in Section 2.1, in order to compare experimental and theoretical data, we have to add to the theoretical population density $n(r, t)$ a constant value b , representing the observed background concentration due to non-motile cells and impurities. Therefore, the experimental density $n_{exp}(r)$ will be compared with the total density, given by the superposition of the two populations, $n_{tot}(r, t) = n(r, t) + b$. The total number of cells N_{tot} becomes

$$N_{tot} = N_s + N_b = 2\pi H \int_0^R r n(r, t) dr + H\pi R^2 b. \quad (13)$$

By using the total population density, the stationary average distance (12) becomes

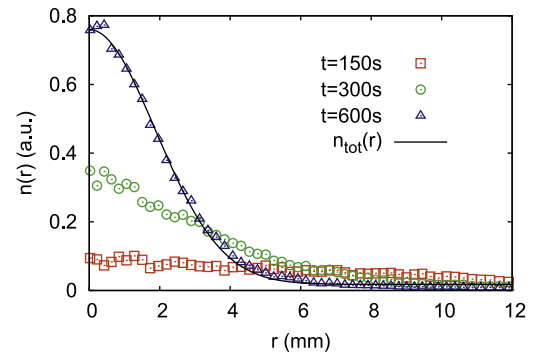


Fig. 2. Evolution of the experimental radial population density $n_{exp}(r, t)$ (in arbitrary units) for the experiment at frequency $f = 7 \text{ Hz}$ a time $t = 150 \text{ s}$ (red squares), $t = 300 \text{ s}$ (green circles) and at time $t = 600 \text{ s}$ (blue triangles) as a function of the distance from the cylinder axis r . The black solid line represents the theoretical prediction for the total density $n_{tot}(r) = n_s(r) + b$ with $n(r)$ given by (11). The cell's parameters are $v_s = 0.1 \text{ mm/s}$, $B = 7.5 \text{ s}$, $d_r = 0.067 \text{ rad/s}$ ($\lambda = 1.0$). The background parameter is fitted to $b = 0.017$ which corresponds to $\beta = N_b/N_s \approx 1.1$ (For interpretation of the references to color in this figurecaption, the reader is referred to the web version of thispaper.).

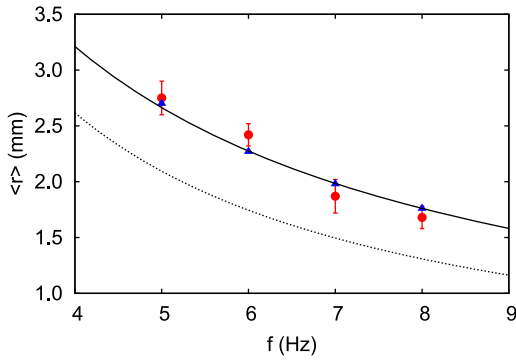


Fig. 3. Stationary radius of cell population, $\langle r \rangle$ from experimental distribution (15) (red circles) and theoretical prediction, both in the absence of non-motile background cells (12) (dotted line) and with background contribution (14) with $\beta = 1.1$ (solid line). The error bars on the experimental data are obtained from the temporal fluctuations of the asymptotic radius for $t > 600$ s. The blue triangles represent the asymptotic values obtained from numerical simulations of a population of 10^5 swimmers as explained in Section 2.5 (For interpretation of the references to color in this figurecaption, the reader is referred to the web version of thispaper.).

$$\langle r \rangle = \frac{1 + c^2\beta}{\langle r_s \rangle^{-1} + 2c\beta R^{-1}} \quad (14)$$

where $\langle r_s \rangle$ is given by (12), $\beta \equiv N_b/N_s$ is the ratio of the two populations and $c = R_v/R = 2/3$ is a numerical correction due to the fact that the experimental radial distribution is sampled only up to $R_v < R$.

Fig. 2 shows the time evolution of the experimental radial population distribution for the experiment at $f = 7$ Hz. As one can see, the population of swimming cells progressively concentrates around the axis of the cylinder ($r=0$). After the last time shown in the plot ($t = 600$ s, which corresponds to the images shown in Fig. 1) the distribution remains statistically stationary. The theoretical asymptotic distribution (11) is used to fit the stationary distribution. As in (11) the cell's parameters enter only in the combinations $v_s B$ and $Bd_r = \lambda$ we cannot use the stationary

distribution to fit all the parameters. We have therefore chosen to fix two of the parameters as given by literature i.e. $v_s = 100 \mu\text{m/s}$ and $d_r = 0.067 \text{ rad/s}$ (Harris, 2009; Williams and Bees, 2011), and to use the orientation time B as a fitting parameter. The resulting value, $B = 7.5$ s, is compatible with estimations for *Chlamydomonas* (Yoshimura et al., 2003; Roberts, 2006). We remark however that, as clear from the above discussion, other combinations of the parameters are possible. The theoretical asymptotic distribution (11), with the correction of the background term ($b=0.017$), fits very well the experimental data.

Fig. 3 shows the theoretical and experimental values of the mean radius $\langle r \rangle$ in stationary conditions. The experimental stationary radius is obtained by computing, for different values of the rotation frequency f , the time evolution of

$$\langle r(t) \rangle_{\text{exp}} = \frac{\int_0^{R_v} r n_{\text{exp}}(r, t) dr}{\int_0^{R_v} n_{\text{exp}}(r, t) dr} \quad (15)$$

and looking at the plateau that can be observed at long time values (see Fig. 4). Fig. 3 shows both the theoretical value in the absence of background (12), which clearly underestimates the asymptotic radius, and the expression (14) corrected with the background coefficient $\beta = 1.1$. We remark that the theoretical line in Fig. 3 is obtained without free parameters, as β is fitted from the asymptotic distribution $n_s(r)$ for a single rotation frequency (Fig. 2).

By using the numerical method discussed in Section 2.5 it is possible to obtain the time evolution of the radial population density $n(r, t)$ and of the mean radius. We remark that the time evolution of the population density depends on a different combination of the parameters with respect to the stationary distribution. Therefore, the ability to reproduce the experimental dynamics from the numerical integration of (3)–(6), without additional fitting parameters, is both a test of the validity of the mathematical model and of the chosen set of parameters. The time evolution of the mean radius is shown in Fig. 4 for the four different values of rotation and with the contribution of the background term $b=0.017$ as for the theoretical analysis. The presence

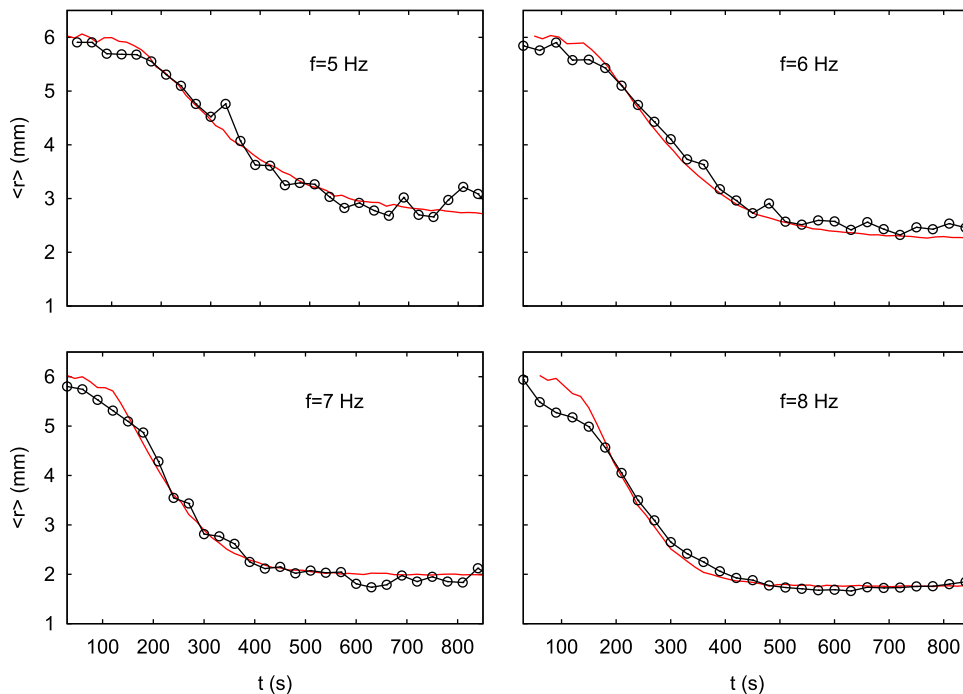


Fig. 4. Cell population radius as a function of time measured in experiments (symbols) and in simulations with background $\beta = 1.1$ (red solid line). Model parameters as in Fig. 2. We introduced in the numerical data a time shift Δt in the range 10–50 s as the initial phase of spin-up is not reproduced by the simulations (For interpretation of the references to color in this figurecaption, the reader is referred to the web version of thispaper.).

of an initial plateau of almost constant $\langle r \rangle$ (which is more evident for the experiments at lower frequencies) is a consequence of the fact that the average in (15) is taken over the inner cylinder of radius $R_i < R$ (indeed, the analysis of the numerical data up to R shows that the plateau disappears). The quality of the agreement between the theoretical prediction and the experimental evolution of the mean radius is remarkable.

4. Conclusion and discussion

We have studied the centripetal focusing of gyrotactic microalgae around the axis of a rotating container. By using a refined model of gyrotactic motion (which takes into account the effect of fluid acceleration on cell orientation) we derived an effective equation for the evolution of the population density inside the container. The analytical predictions for the stationary distribution and its characteristic size reproduce accurately the experimental data obtained from a population of *C. augustae* in a vessel rotating with different angular velocities. The time evolution of the distribution is obtained by stochastic simulations of the Fokker–Planck equation. Also in this case the results reproduce accurately the experimental data without additional free parameters.

One of the motivations of our study is to better understand the behavior of gyrotactic organisms in a turbulent environment (natural or artificial) characterized by strong region of vorticity. Indeed, recent numerical simulations have shown that gyrotactic swimmers are able to concentrate in regions of high vorticity even if these regions are very localized and ephemeral, as in the case of homogeneous turbulence (De Lillo et al., 2014). In this perspective, the vertical solid body rotator has to be considered as a “toy model” of a turbulent vortex for which analytical prediction are possible. Similar configurations of uniform vorticity have been studied recently and proposed for laboratory experiments in theoretically controlled conditions (Thorn and Bearon, 2010; Pedley, 2015). On the basis of our results, artificial turbulent flows could be designed to optimize the trapping of swimming cells in specific regions.

More in general, understanding the interplay between swimming and fluid transport is crucial to rationalize phytoplankton ecology (Reynolds, 2006; Kiørboe, 2008) and also for industrial applications. For example, many (motile) microalgae are cultured in photobioreactors to be commercially used as nutrients, for biofuels production or for cosmetic industry (Borowitzka, 1999). As bioreactors work both in laminar and turbulent fluid motion (Croze et al., 2013), a better understanding the interaction between fluid motion and swimming is fundamental to optimize efficiency.

Competing interests

The authors declare no competing interests.

Acknowledgments

We thank F. de Lillo for useful discussions and for carefully reading the manuscript and N. Dibiase for help with the experimental setup. We acknowledge the European COST Action MP1305 “Flowing Matter” for support. *C. augustae* were provided by CCALA, Institute of Botany of the AS CR, Tebon Czech Republic.

Appendix A. Solution of the deterministic model

The radial evolution of the deterministic model (3)–(6) can be

solved using the equilibrium hypothesis (i.e. assuming that $\dot{\mathbf{p}} = 0$, which should be valid for times much larger than B). The symmetries of the problem suggest that $\mathbf{p}_r = p_r(r)\hat{\mathbf{r}}$ and $\mathbf{p}_z = p_z(r)$, with $p_r^2(r) + p_z^2(r) = 1$. To find the expressions for p_r and p_z , it is convenient to multiply (5) by \mathbf{p}_r , using $\mathbf{p}_r^\perp \cdot \mathbf{p}_r = 0$, one obtains $\mathbf{p}_r = -(\gamma\mathbf{r})/\sqrt{1+(\gamma r)^2}$ and $p_z = 1/\sqrt{1+(\gamma r)^2}$ whose physical interpretation is transparent: \mathbf{p} aligns in the direction opposite to the total acceleration (see Eq. (7)).

Multiplying (3) by \mathbf{r} we obtain that the radial distance evolves according to

$$\dot{r} = -\gamma v_s \frac{r}{\sqrt{1+(\gamma r)^2}}. \tag{A.1}$$

When $\gamma r \ll 1$, Eq. (A.1) reduces to $\dot{r} = -\gamma v_s r$ implying an exponential decay of the distance from the axis, see Eq. (8). When $\gamma r \gg 1$, Eq. (A.1) reduces to $\dot{r} \approx -v_s$ so that we have $r(t) = r(0) - v_s t$, i.e. a linear decrease of the distance from the axis of rotation. For generic γr , Eq. (A.1) is solved by

$$\frac{r}{r_0} \frac{1 + \sqrt{1+(\gamma r_0)^2}}{1 + \sqrt{1+(\gamma r)^2}} e^{\sqrt{1+(\gamma r)^2} - \sqrt{1+(\gamma r_0)^2}} = e^{-\gamma v_s t} \tag{A.2}$$

with $r_0 = r(0)$ and $r = r(t)$. In typical experimental condition we have $\gamma \approx 65 - 250$ for $f = 4 - 8$ Hz so that for $r_0 = O(1)$ cm we have $(\gamma r) \approx 0.6 - 2.5$. Therefore, at least at the beginning, there will be deviation from the exponential regime, which shows up in the latest stage of the (deterministic) evolution.

Appendix B. Derivation of stationary population density in the presence of rotational diffusivity

Here, we derive the effective drift and diffusion tensor of the advection diffusion Eq. (10). Then we compute the stationary population density and use it to derive the average distance from the cylinder axis. We detail the method in two dimensions ($d=2$), because algebra is straightforward and closed expressions for the quantities of interest can be found. We then generalize the result to $d=3$, which is the case relevant for the experiment.

B.1. Analytical approximation in $d=2$

As clear from Eq. (3), the fluid velocity causes only rotation around the cylinder axis and does not contribute directly to the radial evolution, which is controlled by swimming. However, rotation and, in particular, the associated centripetal acceleration makes the swimming direction to depend on the radial distance, as clear from Eqs. (5) and (3). We can thus study the problem in two dimensions by focusing on the vertical (z) and radial (r) direction only and considering the following dynamics:

$$\dot{r} = v_s p_r = v_s \sin \theta \tag{B.1}$$

$$\dot{z} = v_s p_z = v_s \cos \theta \tag{B.2}$$

$$\dot{\mathbf{p}} = -\frac{1}{2B}(\mathbf{A}(r) - (\mathbf{A}(r) \cdot \mathbf{p})\mathbf{p}) + \Gamma_r, \tag{B.3}$$

with $\mathbf{A}(r) = \gamma\mathbf{r} - \hat{\mathbf{z}}$. By choosing θ as the angle with the vertical and by posing $\gamma = \Omega^2/g$, we will end up with expressions that can be directly used in the $d=3$ case. The stochastic term Γ_r represents rotational diffusion used to model stochasticity in the swimming orientation (Pedley and Kessler, 1987, 1992). In $d=2$, Eq. (B.3) can

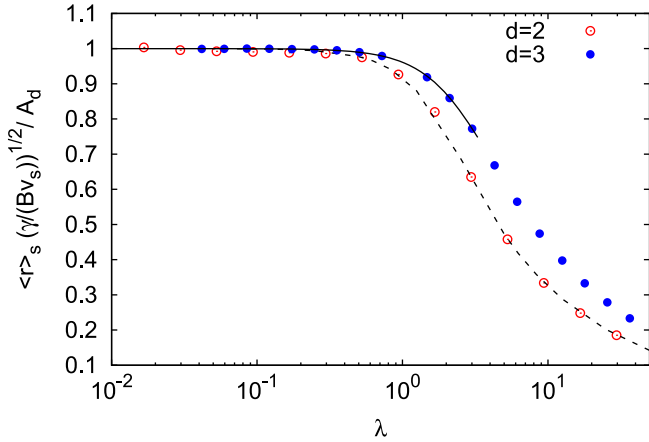


Fig. B1. Comparison between analytical computation of the average radial distance at stationarity and the numerical computation, in both two and three dimensions. Normalized average radial distance at stationarity, $\langle r \rangle_s (\gamma / v_s B)^{1/2} / A_d$ (with $A_2 = \sqrt{4/\pi}$ and $A_3 = \sqrt{2/\pi}$) vs λ compared with the analytical predictions $F_2(\lambda)$ and $F_3(\lambda)$ given in Eqs. (B.18) and (B.25) respectively (lines). For the case $d=3$ the convergence of the recursion relations requires very high accuracy for $\lambda > 3$.

be conveniently rewritten as a stochastic differential equation for the angle

$$\dot{\theta} = -\frac{1}{2B}(\sin \theta + \gamma r \cos \theta) + \sqrt{2d_r} \eta(t). \quad (\text{B.4})$$

Rotational diffusion simply becomes diffusion of the angle, where η is white noise of unit variance. By nondimensionalizing the time one easily derives that the orientation distribution is a function of γ and of the non-dimensional parameter $\lambda = 1/(2Bd_r)$, quantifying the cell stability with respect to rotational Brownian motion, a large (small) value of λ means that cell orientation is dominated by the bias (rotational diffusion).

For $\gamma = 0$, the model describes the evolution of gyrotactic swimmers in a two dimensional still fluid, a problem for which the effective advection-diffusion Eq. (10) for the population density has been derived analytically (Bearon et al., 2011). Here, we summarize the results and formulas needed in the following (see Appendix A.1 of Ref. (Bearon et al., 2011) for a detailed derivation). The stationary distribution of the swimming orientation, i.e. the PDF of θ , is the von Mises probability density function with zero mean, meaning that the average swimming direction is along the vertical,

$$f^{(0)}(\theta) = \frac{1}{2\pi I_0(\lambda)} e^{\lambda \cos \theta}, \quad (\text{B.5})$$

where $I_k(\lambda)$ is the modified Bessel function of the first kind and order k (Mardia and Jupp, 2009). In the above equation and in the following we shall use the superscript (0) to denote the $\gamma = 0$ results. The population density $n(r, z, t)$ is described by an effective advection-diffusion equation like (10) with drift given by

$$\mathbf{V}^{(0)} = v_s \int d\theta (\sin \theta, \cos \theta) f^{(0)}(\theta) = v_s (0, \frac{I_1(\lambda)}{I_0(\lambda)}), \quad (\text{B.6})$$

and diffusion tensor

$$\mathbb{D}^{(0)} = \frac{v_s^2}{d_r} \text{Diag}\{D_{\perp}^{(0)}(\lambda), D_{\parallel}^{(0)}(\lambda)\}, \quad (\text{B.7})$$

where v_s^2/d_r gives the dimensional contribution; \perp and \parallel label the direction perpendicular and parallel to the bias, respectively. For $\gamma = 0$ the swimming direction is biased toward $\hat{\mathbf{y}}$. The perpendicular component of the diffusion tensor can be found exactly (Bearon et al., 2011)

$$D_{\perp}^{(0)}(\lambda) = \frac{1}{\lambda^2} \left(1 - \frac{1}{(I_0(\lambda))^2} \right). \quad (\text{B.8})$$

For the parallel one only an approximate expression (not reported here, as not needed in the following) can be found.

When $\gamma \neq 0$, swimming is biased toward a direction that depends on r . Our approximation consists in taking r fixed in Eq. (B.4) and finding the stationary PDF of θ which will depend on r parametrically. This is a sort of adiabatic approximation, valid when r does not change much in the time scale over which the PDF of orientation becomes stationary. In this way the average swimming direction will depend on r as

$$\hat{\mathbf{b}} = \left(\frac{-\gamma r}{\sqrt{1 + (\gamma r)^2}}, \frac{1}{\sqrt{1 + (\gamma r)^2}} \right), \quad (\text{B.9})$$

being at an angle $-\Phi(r)$ with $\Phi(r) = \arctan(\gamma r)$ with respect to $\hat{\mathbf{y}}$. Since r is assumed fixed, the PDF of θ will simply be (B.5) with mean $-\Phi(r)$, i.e.

$$f^{(\gamma)}(\theta; r) = f^{(0)}(\theta + \Phi(r)) = \frac{e^{\frac{\lambda (\cos \theta - \gamma r \sin \theta)}{\sqrt{1 + (\gamma r)^2}}}}{2\pi I_0(\lambda)}. \quad (\text{B.10})$$

Now the drift and diffusion tensor for the $\gamma \neq 0$ case can be obtained from those computed at $\gamma = 0$ simply changing to a new (position dependent) frame of reference, essentially we need to rotate the $\gamma = 0$ solution at each point matching the vertical with the local biasing direction. Introducing the rotation matrix

$$\mathbb{R} = \begin{pmatrix} \frac{1}{\sqrt{1 + (\gamma r)^2}} & \frac{-\gamma r}{\sqrt{1 + (\gamma r)^2}} \\ \frac{\gamma r}{\sqrt{1 + (\gamma r)^2}} & \frac{1}{\sqrt{1 + (\gamma r)^2}} \end{pmatrix}, \quad (\text{B.11})$$

the drift can be expressed as

$$\mathbf{V}^{(\gamma)} = \mathbb{R} \mathbf{V}^{(0)} = v_s \frac{I_1(\lambda)}{I_0(\lambda)} \hat{\mathbf{b}} \quad (\text{B.12})$$

with $\hat{\mathbf{b}}$ given in (B.9), and the diffusion tensor by $\mathbb{D}^{(\gamma)} = \mathbb{R} \mathbb{D}^{(0)} \mathbb{R}^T$. As for the latter we are mainly interested in the radial component which reads

$$D_r^{(\gamma)} = \frac{v_s^2 D_{\perp}^{(0)}(\lambda) + (\gamma r)^2 D_{\parallel}^{(0)}(\lambda)}{d_r (1 + (\gamma r)^2)}. \quad (\text{B.13})$$

Now we can approach the advection diffusion Eq. (10). In particular, because neither the drift nor the diffusion tensor depends on z , we can integrate over z and derive the equation for the radial dynamics, which is the one of interest for us,

$$\partial_t n - \partial_r \left(v_s \frac{I_1(\lambda)}{I_0(\lambda)} \frac{\gamma r n}{\sqrt{1 + (\gamma r)^2}} + D_r^{(\gamma)} \partial_r n \right) = 0. \quad (\text{B.14})$$

Imposing stationarity in the above equation, the resulting ordinary differential equation can be integrated obtaining

$$n_s(r) = \mathcal{N} \exp(-G(r)) \quad (\text{B.15})$$

with \mathcal{N} a suitable normalizing constant and

$$G(r) = \frac{d_r}{v_s \gamma} \frac{I_1}{I_0} \frac{\mathcal{D}}{D_{\parallel}^{(0)}} (g(r) - \arctan(g(r))) \quad (\text{B.16})$$

with $\mathcal{D} = \sqrt{(D_{\perp}^{(0)} - D_{\parallel}^{(0)})/D_{\parallel}^{(0)}}$ and $g(r) = \sqrt{1 + (\gamma r)^2} / \mathcal{D}$. In the limit $(\gamma r) \ll 1$, $G(r)$ can be expanded in

$$G(r) \approx \frac{1}{2} \frac{\gamma d_r I_1(\lambda)}{v_s D_{\perp}^{(0)}(\lambda) I_0(\lambda)} r^2 = \frac{1}{4} \frac{\gamma}{v_s B F_2^2(\lambda)} r^2, \quad (\text{B.17})$$

with

$$F_2(\lambda) = \left[\frac{I_0(\lambda) - I_0^{-1}(\lambda)}{\lambda I_1(\lambda)} \right]^{1/2}. \quad (\text{B.18})$$

Hence the stationary population takes a Gaussian form.

Then we can compute the average radial distance $\langle r \rangle_s$ at stationarity as

$$\langle r \rangle_s = \frac{\int_0^{\infty} r m_s(r) dr}{\int_0^{\infty} n_s(r) dr} = \left(\frac{v_s B}{\gamma} \right)^{1/2} \sqrt{\frac{4}{\pi}} F_2(\lambda), \quad (\text{B.19})$$

in very good agreement with simulations (Fig. B1).

B.2. Analytical approximation in $d=3$

The computation in $d=3$ can be performed following step by step the procedure above described for the two-dimensional model.

For $\gamma = 0$ in $d=3$, unlike $d=2$, we do not have closed expressions. However, there are exact results expressing the quantities of interest in terms of series in $\lambda = 1/(2Bd_r)$, which have been obtained in reference Bearon et al. (2012) (using previous results from references Pedley and Kessler (1987, 1990, 1992)). We briefly summarize the results in the following.

For $\gamma = 0$, the orientation distribution is the von Mises–Fisher distribution (Mardia and Jupp, 2009)

$$f^{(0)}(\mathbf{p}) = \mu(\lambda) e^{\lambda \mathbf{p} \cdot \hat{\mathbf{z}}} = \mu(\lambda) e^{\lambda \cos \theta}, \quad (\text{B.20})$$

with $\mathbf{p} = (\cos \phi \sin \theta, \sin \phi \sin \theta, \cos \theta)$ and $\mu(\lambda) = \lambda/(4\pi \sinh \lambda)$. The drift has the following exact expression (Pedley and Kessler, 1987, 1990, 1992):

$$\mathbf{V}^{(0)} = v_s \int d\mathbf{p} \mathbf{p} f^{(0)}(\mathbf{p}) = v_s(0, 0, K_1(\lambda)) \quad (\text{B.21})$$

with $K_1(\lambda) = \coth \lambda - 1/\lambda$; while the diffusion tensor is

$$\mathbb{D}^{(0)} = \frac{v_s^2}{d_r} \text{Diag}\{D_{\perp}^{(0)}(\lambda), D_{\perp}^{(0)}(\lambda), D_{\parallel}^{(0)}(\lambda)\} \quad (\text{B.22})$$

with the two entries perpendicular to the direction of gravity equal. As for the $d=2$ we only need the perpendicular component which takes the form (Bearon et al., 2012):

$$D_{\perp}^{(0)}(\lambda) = J_1(\lambda) \lambda^{-2}, \quad (\text{B.23})$$

with the numerator given by the series

$$J_1(\lambda) = \frac{4\pi}{3} \lambda \mu(\lambda) \sum_{k=0}^{\infty} \lambda^{2k+1} a_{2k+1,1}. \quad (\text{B.24})$$

The coefficients $a_{k,n}$ can be obtained by the recursion (see references Bearon et al., 2012; Pedley and Kessler, 1990 for details):

$$a_{k+1,n} = - \frac{(n+2)a_{k,n+1}}{(n+1)(2n+3)} + \frac{(r-1)a_{k,n-1}}{r(2r-1)} + \frac{b_{k+1,n}}{n(n+1)},$$

$$b_{k+1,n} = \frac{(2n+1)\Gamma(\frac{n+1}{2})\Gamma(\frac{n+2}{2})}{\Gamma(n+1)\Gamma(4\frac{k-n+3}{2})\Gamma(\frac{k+n+4}{2})} \quad \text{if } k+n \text{ odd}$$

and $b_{k+1,n} = 0$ otherwise.

With the appropriate rotation matrix, and following the steps described in Appendix B.1, we obtain the very same expressions found in $d=2$ for the radial component of diffusion tensor (see

Eq. (B.13)). In particular, we have that at stationarity in the limit $(\gamma r) \ll 1$ the population density takes the expression (B.15) with

$$G(r) = \frac{1}{2} \frac{\gamma r^2}{v_s B F_3^2(\lambda)} \quad \text{with } F_3(\lambda) = \left[\frac{2J_1(\lambda)}{\lambda K_1(\lambda)} \right]^{1/2}. \quad (\text{B.25})$$

Hence, at stationarity, we find the average radial distance

$$\langle r \rangle_s = \frac{\int_0^{\infty} r m_s(r) dr}{\int_0^{\infty} n_s(r) dr} = \left(\frac{v_s B}{\gamma} \right)^{1/2} \sqrt{\frac{\pi}{2}} F_3(\lambda). \quad (\text{B.26})$$

in perfect agreement with simulation results (Fig. B.5).

References

Andersen, R., 2005. Algal Culturing Techniques. Elsevier, Academic Press, Amsterdam.

Bearon, R., Hazel, A., Thorn, G., 2011. The spatial distribution of gyrotactic swimming micro-organisms in laminar flow fields. *J. Fluid Mech.* 680, 602–635.

Bearon, R., Bees, M., Croze, O., 2012. Biased swimming cells do not disperse in pipes as tracers: a population model based on microscale behaviour. *Phys. Fluids* 24, 121902.

Bees, M.A., Hill, N.A., Pedley, T.J., 1998. Analytical approximations for the orientation distribution of small dipolar particles in steady shear flows. *J. Math. Biol.* 36, 269–298.

Biferale, L., Boffetta, G., Celani, A., Lanotte, A., Toschi, F., 2005. Particle trapping in three-dimensional fully developed turbulence. *Phys. Fluids* 17, 021701.

Bollens, S.M., Rollwagen-Bollens, G., Quenette, J.A., Bochdansky, A.B., 2011. Cascading migrations and implications for vertical fluxes in pelagic ecosystems. *J. Plank. Res.* 33, 349–355.

Borowitzka, M.A., 1999. Commercial production of microalgae: ponds, tanks, tubes and fermenters. *J. Biotechnol.* 70, 313–321.

Chini Zittelli, G., Pastorelli, R., Tredici, M.R., 2000. A modular flat panel photobioreactor (mfpp) for indoor mass cultivation of nanochloropsis sp. under artificial illumination. *J. Appl. Phycol.* 12, 521–526.

Croze, O.A., Sardina, G., Ahmed, M., Bees, M.A., Brandt, L., 2013. Dispersion of swimming algae in laminar and turbulent channel flows: consequences for photobioreactors. *J. R. Soc. Interface* 10, 20121041.

Cullen, J.J., 1985. Diel vertical migration by dinoflagellates: roles of carbohydrate metabolism and behavioral flexibility. *Contrib. Mar. Sci.* 27, 135–152.

De Lillo, F., Cencini, M., Boffetta, G., Santamaria, F., 2013. Geotropic tracers in turbulent flows: a proxy for fluid acceleration. *J. Turbul.* 14, 24–33.

De Lillo, F., Cencini, M., Durham, W.M., Barry, M., Stocker, R., Climent, E., Boffetta, G., 2014. Turbulent fluid acceleration generates clusters of gyrotactic micro-organisms. *Phys. Rev. Lett.* 112, 044502.

Durham, W.M., Kessler, J.O., Stocker, R., 2009. Disruption of vertical motility by shear triggers formation of thin phytoplankton layers. *Science* 323, 1067–1070.

Durham, W.M., Climent, E., Barry, M., De Lillo, F., Boffetta, G., Cencini, M., Stocker, R., 2013. Turbulence drives microscale patches of motile phytoplankton. *Nat. Commun.* 4, 2148.

Elgeti, J., Winkler, R.G., Gompper, G., 2015. Physics of microswimmers—single particle motion and collective behavior: a review. *Rep. Prog. Phys.* 78, 056601.

Fouxon, I., Leshansky, A., 2015. Phytoplankton's motion in turbulent ocean. *Phys. Rev. E* 92 (1), 013017.

Frankel, I., Brenner, H., 1989. On the foundations of generalized Taylor dispersion theory. *J. Fluid Mech.* 204, 97–119.

Greenspan, H., Howard, L., 1963. On a time-dependent motion of a rotating fluid. *J. Fluid Mech.* 17, 385–404.

Gustavsson, K., Berglund, F., Jonsson, P., Mehlig, B., A model for gyrotactic pattern formation of motile micro-organisms in turbulence, arXiv preprint arXiv:1501.02386.

Harris, E.H., 2009. The Chlamydomonas Sourcebook vol. 1. Elsevier Academic Press, Amsterdam.

Hill, N., Bees, M., 2002. Taylor dispersion of gyrotactic swimming micro-organisms in a linear flow. *Phys. Fluids* 14, 2598–2605.

Hill, N., Häder, D., 1997. A biased random walk model for the trajectories of swimming micro-organisms. *J. Theor. Biol.* 186, 503–526.

Kessler, J.O., 1985. Hydrodynamic focusing of motile algal cells. *Nature* 313, 218–220.

Kjørboe, T., 2008. A Mechanistic Approach to Plankton Ecology. Princeton University Press, Princeton.

La Porta, A., Voth, G., Crawford, A., Alexander, J., Bodenschatz, E., 2001. Fluid particle accelerations in fully developed turbulence. *Nature* 409, 1017–1019.

Lieberman, O.S., Shilo, M., Rijn, J., 1994. The physiological ecology of a freshwater dinoflagellate bloom population: vertical migration, nitrogen limitation, and nutrient uptake kinetics. *J. Phycol.* 30, 964–971.

Malkiel, E., Alquaddoomi, O., Katz, J., 1999. Measurements of plankton distribution in the ocean using submersible holography. *Measur. Sci. Technol.* 10, 1142.

Manela, A., Frankel, I., 2003. Generalized Taylor dispersion in suspensions of gyrotactic swimming micro-organisms. *J. Fluid Mech.* 490, 99–127.

- Mardia, K.V., Jupp, P.E., 2009. Directional Statistics, vol. 494, John Wiley & Sons, Chichester.
- O'Malley, S., Bees, M.A., 2012. The orientation of swimming biflagellates in shear flows. *Bull. Math. Biol.* 74, 232–255.
- Pedley, T.J., Kessler, J.O., 1987. The orientation of spheroidal microorganisms swimming in a flow field. *Proc. R. Soc. B* 231, 47–70.
- Pedley, T., Kessler, J., 1990. A new continuum model for suspensions of gyrotactic micro-organisms. *J. Fluid Mech.* 212, 155–182.
- Pedley, T.J., Kessler, J.O., 1992. Hydrodynamic phenomena in suspensions of swimming microorganisms. *Annu. Rev. Fluid Mech.* 24, 313–358.
- Pedley, T., 2015. Gyrotaxis in uniform vorticity. *J. Fluid Mech.* 762, R6.
- Reynolds, C.S., 2006. *The Ecology of Phytoplankton*. Cambridge University Press, Cambridge.
- Roberts, A.M., 2006. Mechanisms of gravitaxis in *Chlamydomonas*. *Biol. Bull.* 210, 78–80.
- Smayda, T.J., 1997. Harmful algal blooms: their ecophysiology and general relevance to phytoplankton blooms in the sea. *Limnol. Oceanogr.* 42, 1137–1153.
- Thorn, G.J., Bearon, R.N., 2010. Transport of spherical gyrotactic organisms in general three-dimensional flow fields. *Phys. Fluids* 22, 041902.
- Torney, C., Neufeld, Z., 2007. Transport and aggregation of self-propelled particles in fluid flows. *Phys. Rev. Lett.* 99, 078101. <http://dx.doi.org/10.1103/PhysRevLett.99.078101>.
- Torney, C., Neufeld, Z., 2008. Phototactic clustering of swimming microorganisms in a turbulent velocity field. *Phys. Rev. Lett.* 101 (7), 078105.
- Wager, H., 1910. The effect of gravity upon the movements and aggregation of *Euglena viridis*, ehrb., and other micro-organisms. *Proc. R. Soc. London B* 83, 94–96.
- Williams, C., Bees, M., 2011. Photo-gyrotactic bioconvection. *J. Fluid Mech.* 678, 41–86.
- Yoshimura, K., Matsuo, Y., Kamiya, R., 2003. Gravitaxis in *Chlamydomonas reinhardtii* studied with novel mutants. *Plant Cell Physiol.* 44, 1112–1118.
- Zhan, C., Sardina, G., Lushi, E., Brandt, L., 2014. Accumulation of motile elongated micro-organisms in turbulence. *J. Fluid Mech.* 739, 22–36.