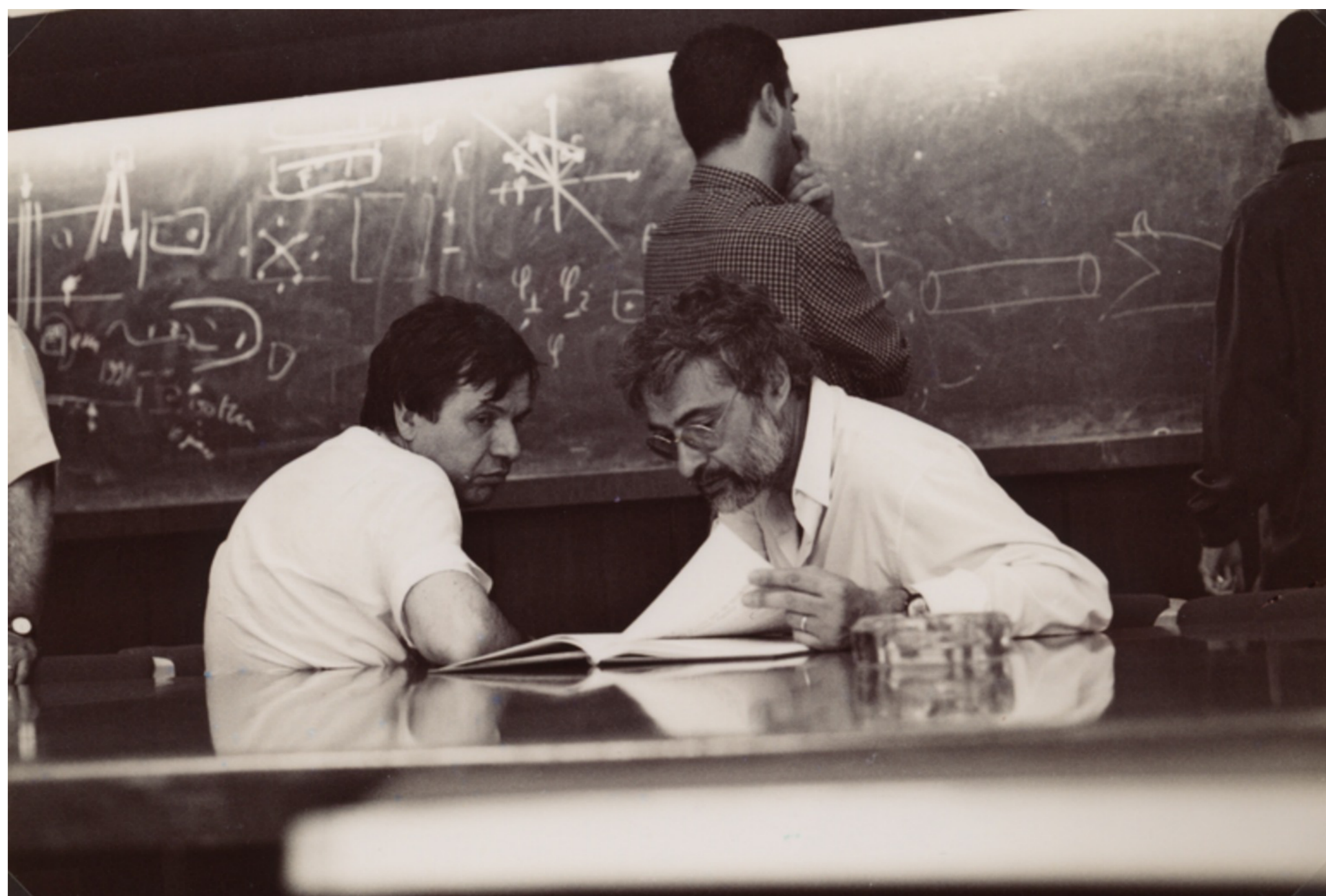


**Exact theory of dense amorphous spheres
in large dimensions**

Giorgio Parisi

(with some slides stolen to Francesco Zamponi)



Absence of breakdown of a continuous symmetry in more than two dimensions

G.J Lasinio, S Pierini, A Vulpiani (1978)

A paper that I found very interesting.

Absence of breakdown of a continuous symmetry in more than two dimensions

G.J Lasinio, S Pierini, A Vulpiani (1978)

A paper that I found very interesting.

I just discovered that I was the author of 100% of the citations of that paper.

We started to work together:

- Stochastic resonance in climatic change Benzi, Parisi, Sutera, Vulpiani (1982)
- Approach to equilibrium in a chain of nonlinear oscillators F. Fucito, F. Marchesoni, E. Marinari, G. Parisi, L. Peliti, S. Ruffo A. Vulpiani (1982)
- On the multifractal nature of fully developed turbulence and chaotic systems (1984) and Characterisation of intermittency in chaotic systems (1985) Benzi, Paladin, Parisi Vulpiani
- We have even written a paper on spin glasses: $1/f$ noise, disorder and dimensionality Marinari, Paladin, Parisi, Vulpiani (1984)

T A N T I S S I M I A U G U R I

A N G E L O

In this talk I will shortly discuss:

- Mean field theory for glasses.
- A new crucial phenomenon: the Gardner-(Gross-Kanter-Sompolisky) transition.
- The new picture arises.
- Conclusions.

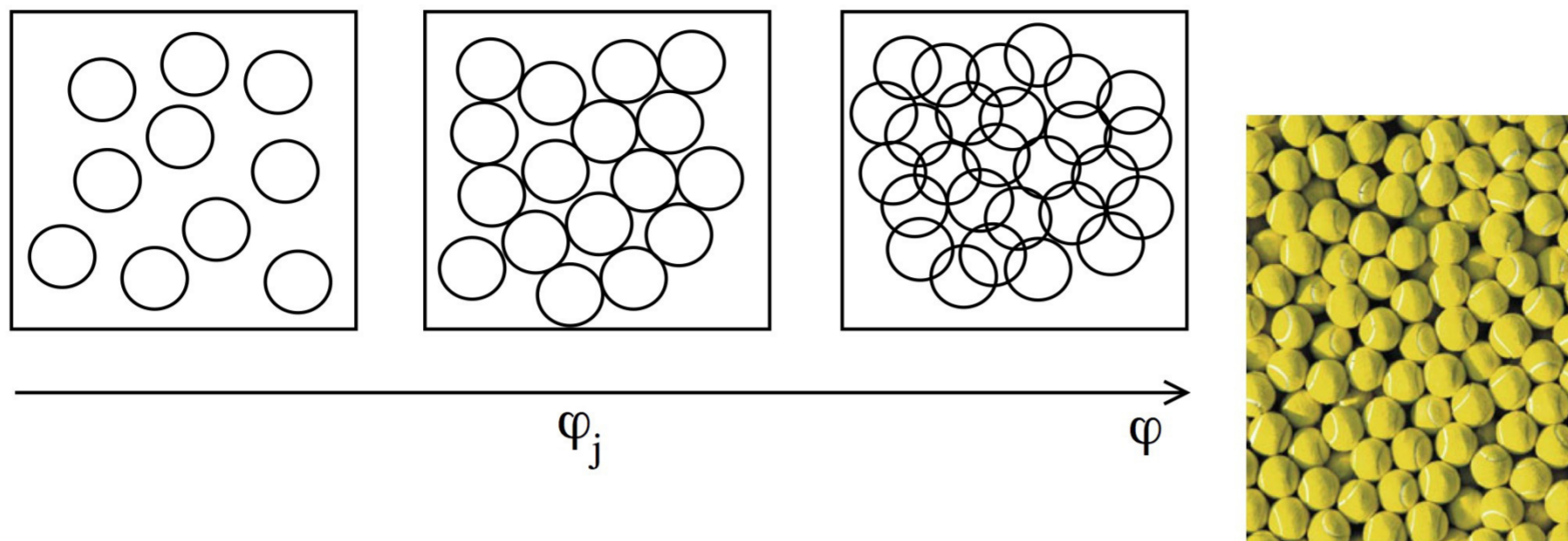
The jamming transition

A transition that is observed in everyday experience

An *athermal* assembly of repulsive particles

Transition from a loose, floppy state to a mechanically rigid state

Above jamming a mechanically stable network of particles in contact is formed



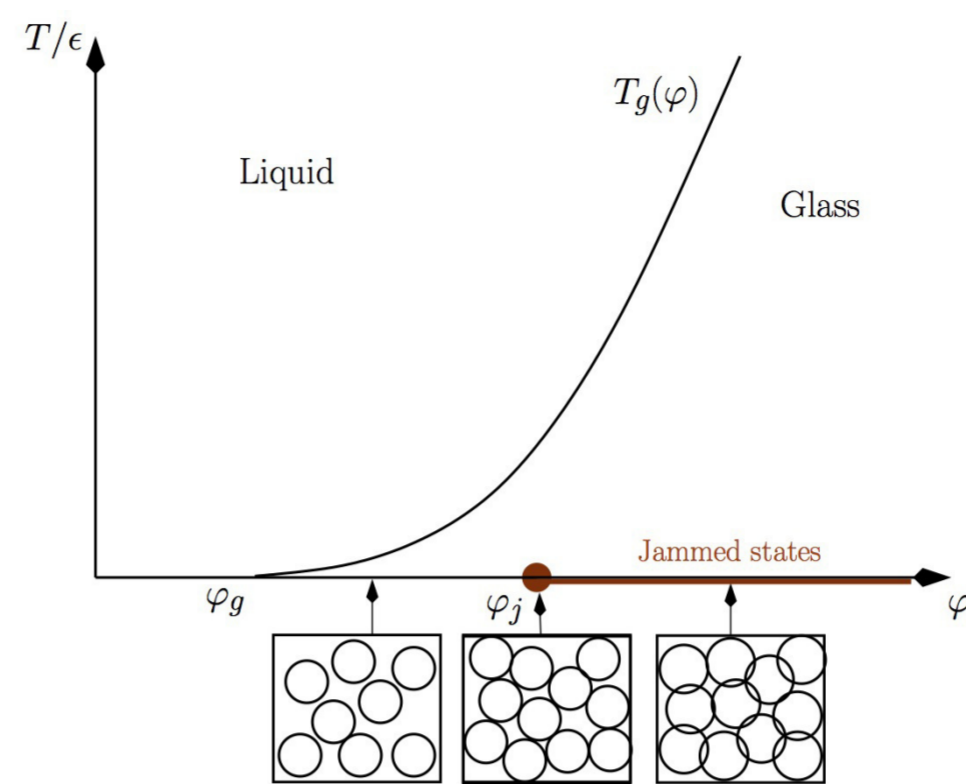
For hard spheres, φ_j is also known as *random close packing*: $\varphi_j(d = 3) \approx 0.64$

[Bernal, Mason, Nature 188, 910 (1960)]

[O'Hern, Langer, Liu, Nagel, PRL 88, 075507 (2002)]

Glass/jamming phase diagram

- Statistical mechanics: introduce temperature T and eventually send $T \rightarrow 0$
- The soft sphere model: $v(r) = \epsilon(1 - r/\sigma)^2\theta(r - \sigma)$
- Two control parameters: T/ϵ and $\varphi = V_\sigma N/V$
- $T/\epsilon = 0$ & $\varphi < \varphi_j \leftrightarrow$ hard spheres



Jamming is a transition from “entropic” rigidity to “mechanical” rigidity

A theoretical description of the glass transition is difficult; and jamming happens inside the glass!

[Berthier, Jacquin, FZ, PRE 84, 051103 (2011)]
 [Ikeda, Berthier, Sollich, PRL 109, 018301 (2012)]

Mean field theory should be exact in some limit (e.g. infinite dimensions, long range....)

High temperature (or low density) the theory is trivial. The problems are at low temperature or high density. A phase transition lurks somewhere.

Two approaches

- Solve the model analytically by brute force or by ingenuity.
- Identify the correct order parameter and to prove later that nothing relevant is missing

Zeroth order approximation

neglect correlations in the liquid phase.

$$g(x) = \exp(-\beta V(x))$$

We can construct models of hard spheres (MK_x) with trivial correlations. (I skip the details).

Frozen phase, where the particles are confined in a cage. The effects of the other particles forbid a given particle to move too much.

The local order parameter is the form of the cage $\psi_i(x - x_i)$.

Free energy functional (Wolynes '80') we can write a free energy that depends on the form and the positions of the cages (e.g. in 3 dimensions).

$$F[\psi_i(x - x_i)]$$

The global order parameter is the probability distribution of the probability of the cages:

$$\mathcal{P}[\psi]$$

We can trivialise the model, neglecting correlations in the liquid. We have a functional order parameter: a big mess for explicit exact computations (Mézard, GP, Tarzia, Zamponi).

Too many forms of the cages. Some approximation is needed.

The simplest approximation (Mézard and GP 1999). All cages are equal and Gaussian with radius A :

$$\psi_i(x_i) \propto \exp\left(-\frac{(x_i - x_i^{cage})^2}{2A}\right)$$

Systematic small A expansion. We can modify this add approximation correlations in the fluid case.

Good results. Hard spheres (GP and Francesco Zamponi).

You can do the computation taking care of the correlations. You find reasonable results at $d = 3$ for the position of the transitions.

Infinity pressure states exist for $0.64 < \phi < .68$ in $d = 3$.

- We have the RFOT scenario.
- We can compute the critical line with good results (Infinity pressure states exist for $0.64 < \phi < .68$ in $d = 3$.)
- We predict generalised fluctuation dissipation relations.
- The pressure diverge as $(\phi_J - \phi)^{-1}$.
- Number of contacts at infinite pressure $6 - 6.1$. No isostaticity!!!
- The size of the cage is proportional to $(\phi_J - \phi)$
- The correlation function $g(r)$ is given by $Z\delta(r - 1)$ +smooth function

What is isostatic???

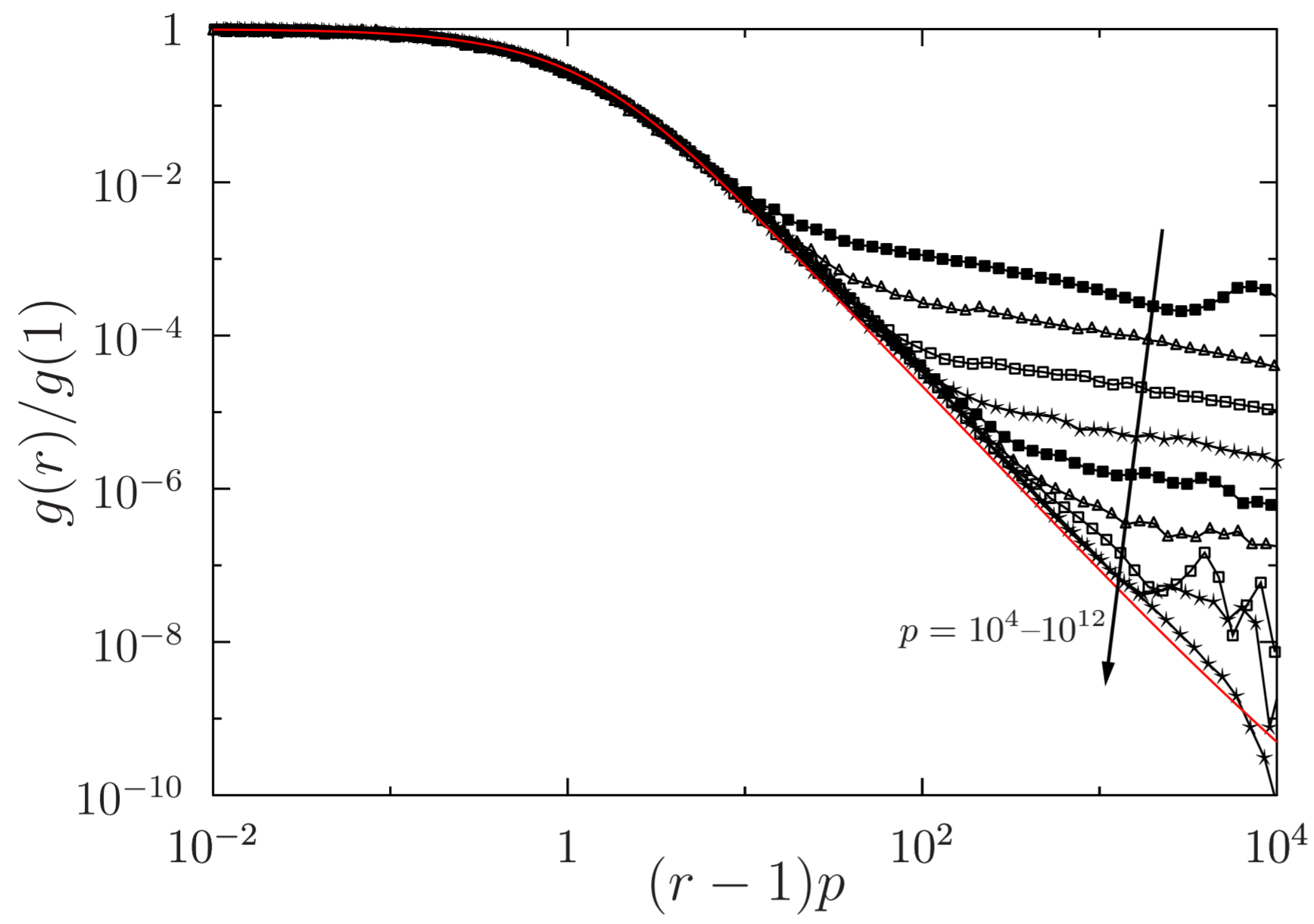
- A table with two legs (unstable) is hypostatic.
- A table with three legs is isostatic.
- A table with four legs (all touch the ground) is hyperstatic.

Hyperstatic marble tables on a marble floor are rare

Maxwell: hard spheres in D dimensions in a box with periodic boundary conditions are isostatic if

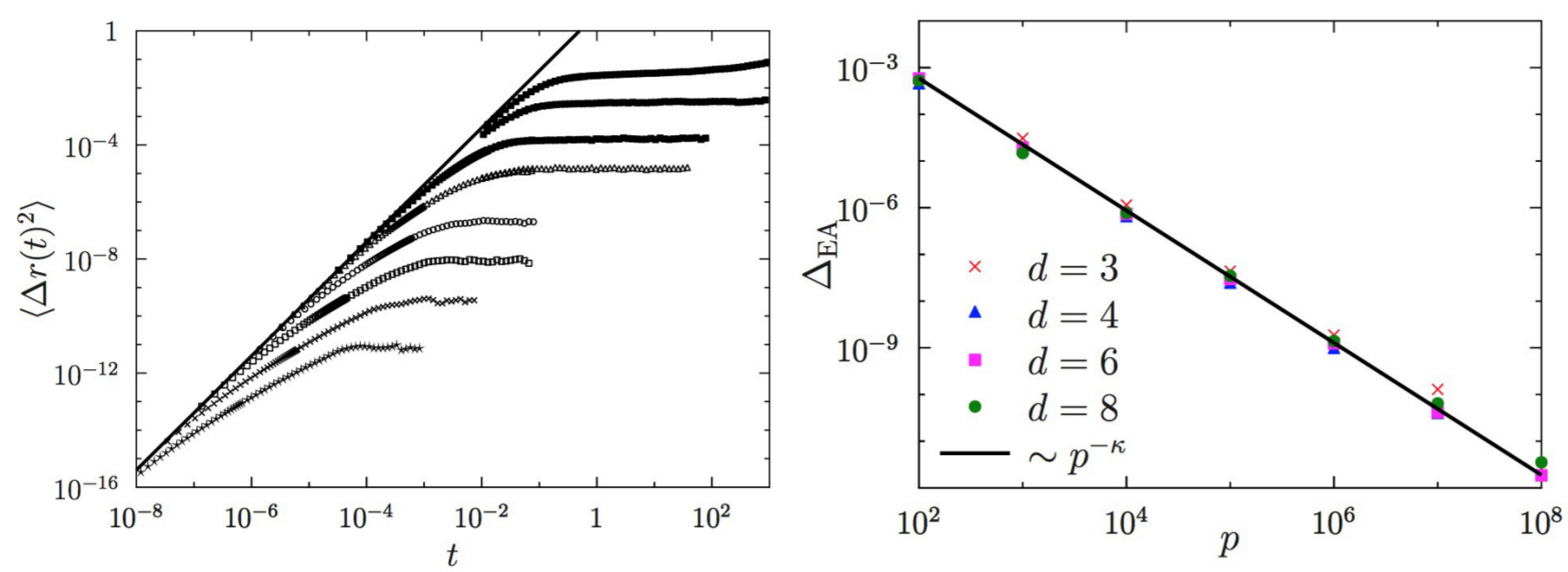
$$\text{NumberOfContacts} = 2D(\text{NumberOfParticles} - 1) - 1$$

$$Z \equiv \frac{\text{NumberOfContacts}}{\text{NumberOfParticles}} \xrightarrow{\quad} = 2D + O(1/N)$$



The correlation function for hard spheres at $D = 4$.

Mean square displacement in the glass



- In the glass the MSD has a plateau: diffusion is arrested, only vibrations
- The plateau value Δ_{EA} is the Debye-Waller factor
- Independent caging: $\Delta_{EA} \sim p^{-2}$ (e.g. crystal)
- Theory: $\Delta_{EA} \sim p^{-\kappa}$ with $\kappa = 1.416$; excellent agreement with MD
- $\Delta_{EA} \gg p^{-2}$: anomalously large vibrations \rightarrow correlated vibrations, soft modes
- Ignoring the Gardner transition leads to $\kappa = 1$, wrong!

[Ikeda, Berthier, Biroli, JCP 138, 12A507 (2013)]

[Charbonneau, Kurchan, Parisi, Urbani, FZ, arXiv:1310.2549]

First reaction: happy. But the critical exponents are trivial (0 or 1).

No problem. We have mean field theory. Non-trivial critical exponents appear only at below the upper critical dimensions.

However: critical exponents are nearly independent from the dimensions.

Violations of isostaticity is worrying.

The troubles do not disappear with the dimension (nice computation in the infinite dimension limit $\hat{\phi} \equiv 2^d/d\phi$)

No problem: the distribution of the cage is far from being Gaussian. It may contains a power law tail.

However.....

Idea: Kurchan, GP, Zamponi

All cats are grey in the dark and all functions are Gaussian in infinite dimensions d .

$$\delta(|x| - d) \approx \exp(-x^2/2) \approx \exp(-d^{1/2}|x|)$$

(microcanonical and canonical ensemble)

$$\delta(H - NE) \approx \exp(-\beta H)$$

So we can dream to take $P_i(x_i)$ to be a Gaussian.

We have explicitly check that Gaussian is OK when $d \rightarrow \infty$

Final approximation

$$\phi_i(x_i) \propto \exp\left(-\frac{(x_i - x_i^{cage})^2}{2A}\right)$$

The number of particle interacting at a given time with a given particle is of order d , a Gaussian distribution is natural.

Conclusions: we should have the the results of GP and Zamponi are correct unless....

unless something new happens: an instability, i.e. divergence of a susceptibility.

Replica Symmetry Breaking (Kurchan, GP, Urbani, Zamponi) instability.

Check stability: for each particle we define the squared radius of cage (the mean squared displacement).

$$\Delta_{TOT} = \sum_{i=1, N} \Delta_i \quad \langle \Delta_{TOT}^2 \rangle - \langle \Delta_{TOT} \rangle^2 \equiv N\chi$$

The susceptibility χ can be computed and its given by

$$\chi^{-1} \propto \phi_G - \phi$$

Theory does not work for $\phi > \phi_G$. What happens for $\phi > \phi_G$??

Biforcations: each solutions for the cage's is surround by many solutions

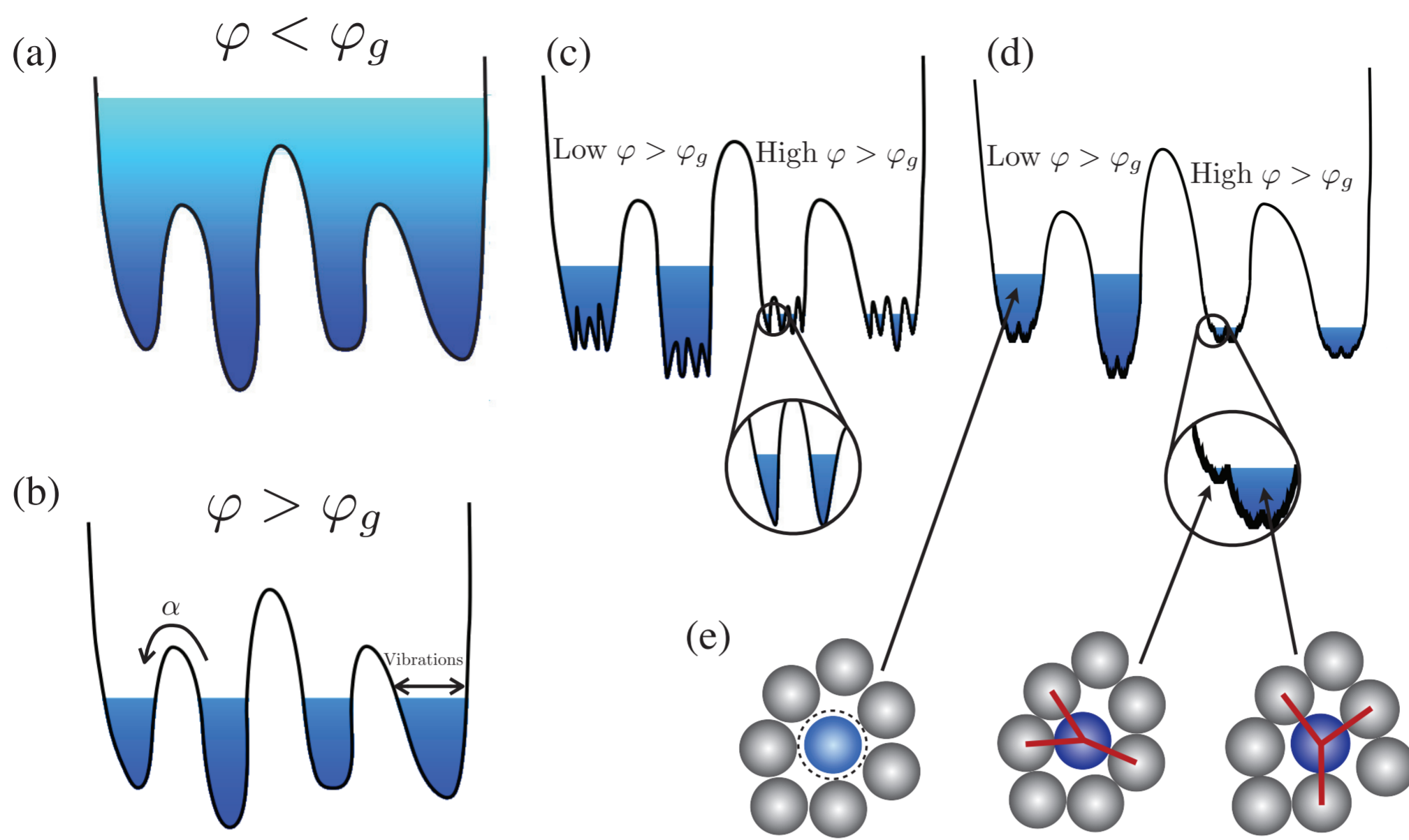
$$\psi_i^\alpha(x) = \psi_i^*(x) + (\phi - \phi_G)^{1/2} \psi_i^\alpha(x) \quad \alpha = 1, \dots$$

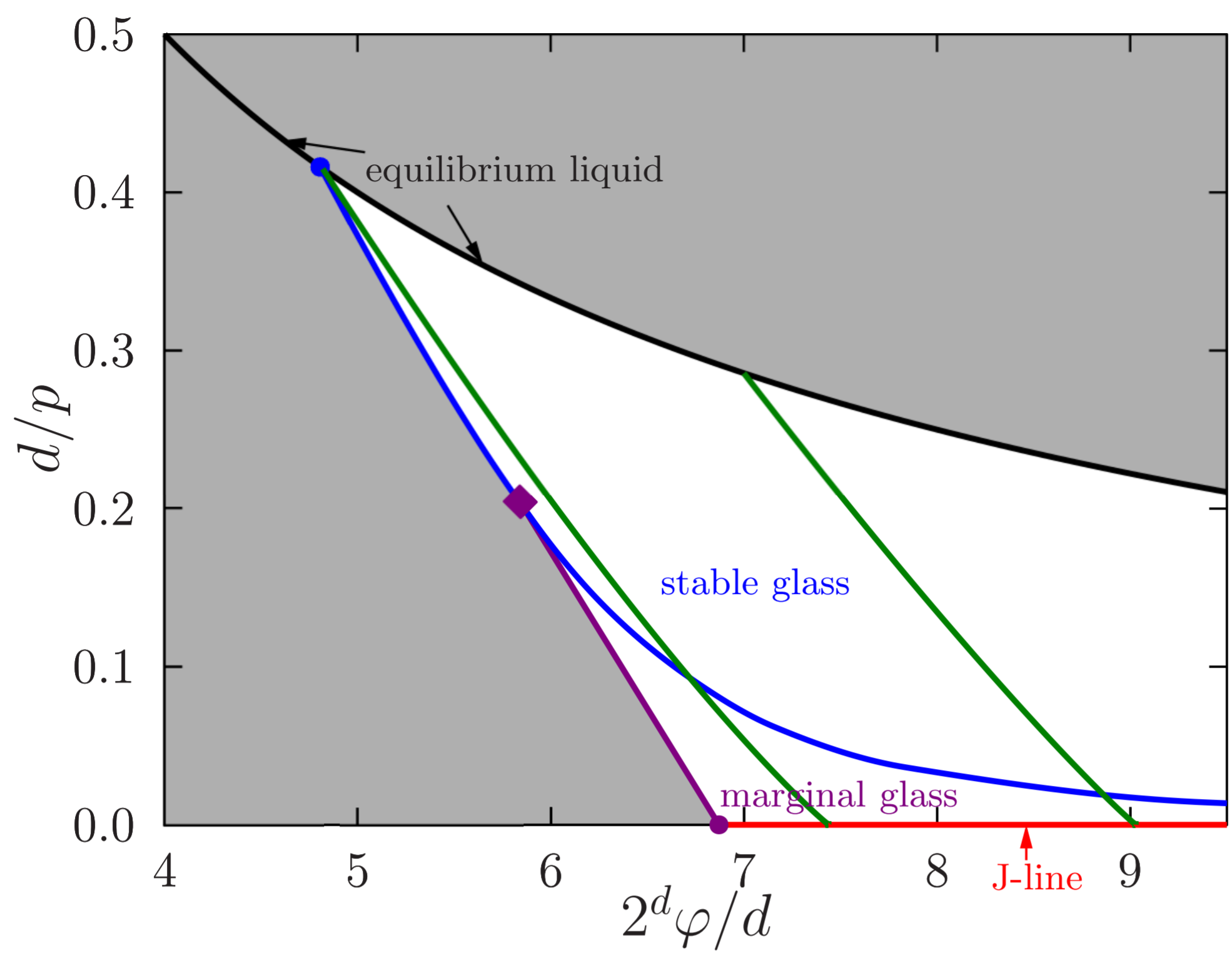
$$\psi_i^\alpha(x) = \psi_{state}(x - x_i^\alpha) \quad P(x_i^\alpha) \text{ is Gaussian centered around } x_i.$$

Each state breaks into a family of states that are nearby one to the other.

We can define a complexity for the states and a complexity for families:

$$\frac{\partial \Sigma_{states}(f)}{\partial f} = \beta m_{states} \quad \frac{\partial \Sigma_{families}(f)}{\partial f} = \beta m_{families}$$
$$m_{states} = m_{families} + A(\phi - \phi_G)$$





We have seen two levels RSB.

Three levels: states are grouped into families, that are grouped into orders....

Continuous Replica Symmetry Breaking

Many subcages distributed in a similar fashion, organised in an hierarchical way:.

We consider K levels: The distribution of the center of masses of the $(k + 1)^{th}$ level are at distance squared of order $1/K$ from the one of the $(k)^{th}$ level. We can write explicit formulae for the various distributions.

At the end of the day we have to do the limit $K \rightarrow \infty$. One finds states that are organised in a hierarchical way.

The probability distribution is rather complex. It needs a certain amount of heavy mathematics to prove that the construction has some sense and the the $K \rightarrow \infty$ limit has a probabilistic limit.

The model can be solved and we arrive to non linear differential equations very similar to those of the Sherrington-Kirkpatrick model.

The low temperature behaviour of SK correspond to infinite pressure in hard spheres.

Highly non trivial scaling limit with non-rational exponents.

We can apply the same ideas to glasses (Charbonneau, Kurchan, GP, Urbani and Zamponi)

After long long algebraic manipulations we get the final expression of the non trivial part of entropy in the full RSB case in the $d \rightarrow \infty$

We introduce a function $\Delta(x)$ in the interval $[m : 1]$

$$S_{\infty\text{RSB}} = -m \int_m^1 \frac{\delta y}{y^2} \log \left[\frac{y\Delta(y)}{m} + \int_y^1 \delta z \frac{\Delta(z)}{m} \right] - \hat{\varphi} e^{-\Delta(m)/2} \int_{-\infty}^{\infty} \delta h e^{h[1-e^{mf(m,h)}]},$$

$$\frac{\partial f(x, h)}{\partial x} = \frac{1}{2} \dot{\Delta}(x) \left[\frac{\partial^2 f(x, h)}{\partial h^2} + x \left(\frac{\partial f(x, h)}{\partial h} \right)^2 \right],$$

$$f(1, h) = \log \Theta \left[\frac{h}{\sqrt{2\Delta(1)}} \right] \quad f_{SK}(1, h) = \log(\tanh(\beta h))$$

$\Theta(x)$ is the error function. The function $\Delta(x)$ parametrise the distribution of the size of the cages.

One step RSB formulae can be obtained as a limit of the full RSB formulae. Three regimes

- Low pressure: Liquid phase
- Intermediate pressure: one step RSB phase: i.e. glassy systems with well separated cages
- High pressure: full RSB phase with cages organised in an hierarchical way.

A Gardner type transition separates the one step RSB phase from the full RSB phase.

Interesting limit: pressure going to infinity, $m \rightarrow 0$. This is the jamming limit!

The marginal stability condition

$$1 = \frac{\hat{\varphi}}{2} \int_{-\infty}^{\infty} \delta h e^h \hat{P}(y, h) \tilde{f}''(y, h)^2$$

implies isostaticity.

Scaling limit when the pressure goes to infinity. The following scaling form reproduces itself in the equations.

$$\widehat{P}(y, h) \approx y^a p(hy^b)$$

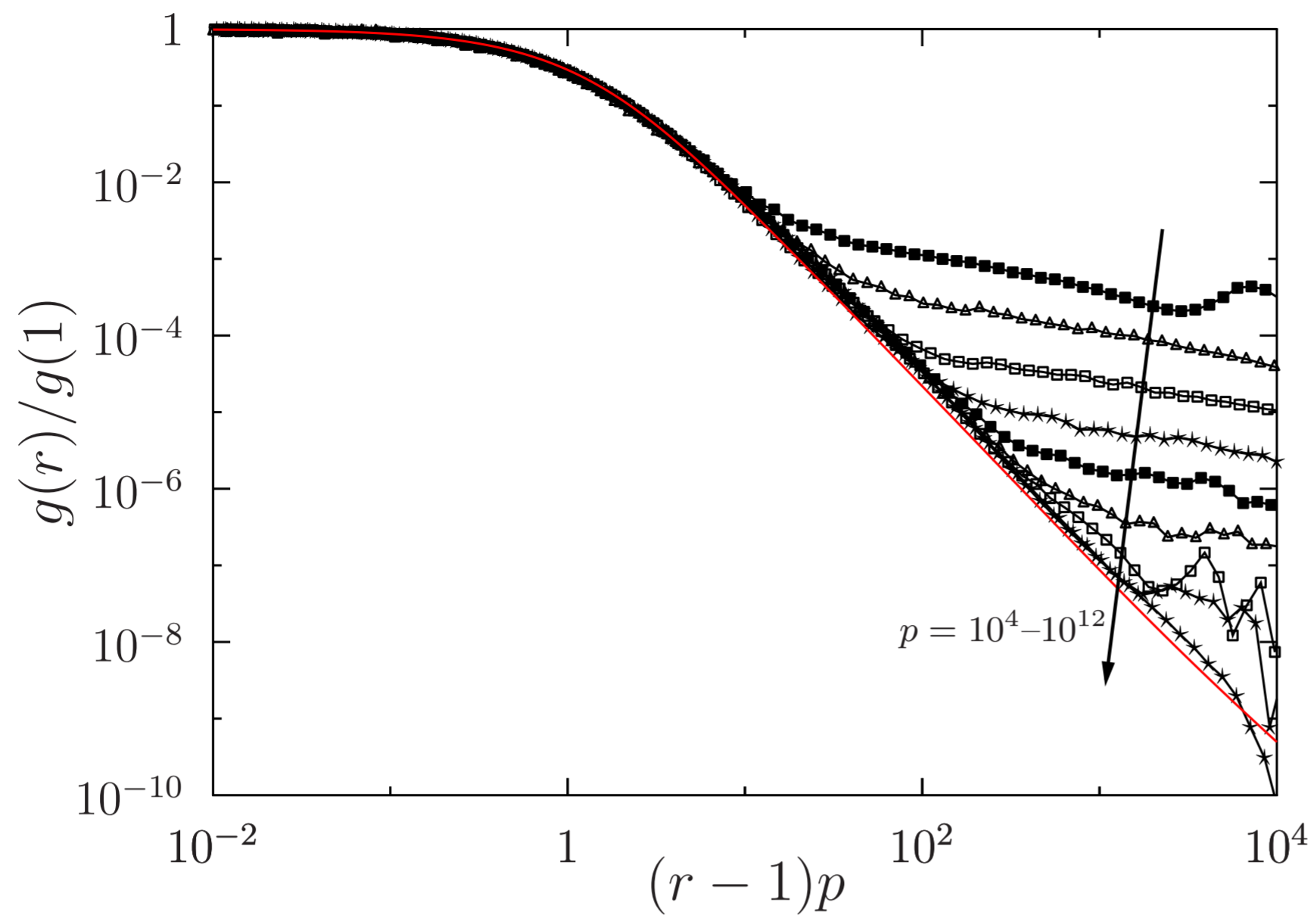
The a and b can be computed analytically from the previous equations in the scaling regime.

At the end we find

$$a = 0.29213$$

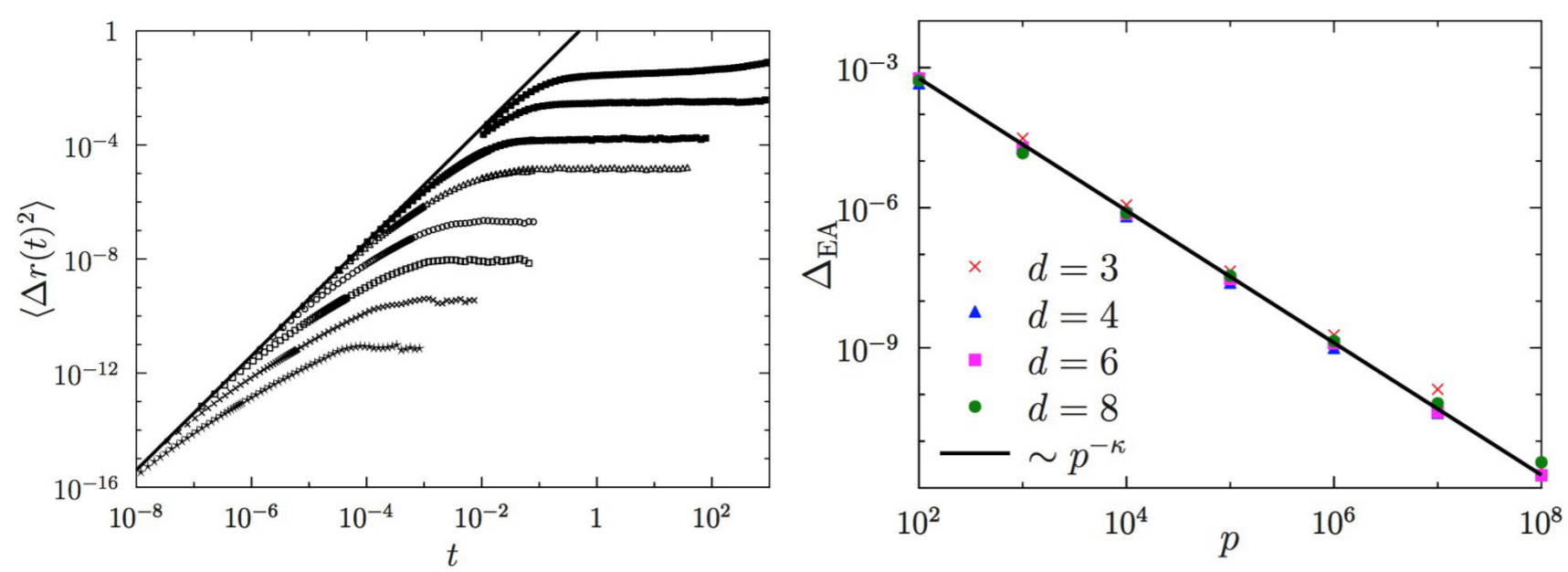
$$b = 0.70787$$

$$a + b = 1$$



The correlation function for hard spheres at $D = 4$.

Mean square displacement in the glass



- In the glass the MSD has a plateau: diffusion is arrested, only vibrations
- The plateau value Δ_{EA} is the Debye-Waller factor
- Independent caging: $\Delta_{EA} \sim p^{-2}$ (e.g. crystal)
- Theory: $\Delta_{EA} \sim p^{-\kappa}$ with $\kappa = 1.416$; excellent agreement with MD
- $\Delta_{EA} \gg p^{-2}$: anomalously large vibrations \rightarrow correlated vibrations, soft modes
- Ignoring the Gardner transition leads to $\kappa = 1$, wrong!

[Ikeda, Berthier, Biroli, JCP 138, 12A507 (2013)]

[Charbonneau, Kurchan, Parisi, Urbani, FZ, arXiv:1310.2549]

Only if we use continuous replica symmetry breaking we find at infinite pressure:

Isostaticity: the number of contacts of spheres Z is equal to ND : each sphere has in the average $2D$ contacts.

The correlation function $g(r)$ has a singularity at $r = 1$:

$$g(r) = 2D\delta(r - 1) + C(D)(r - 1)^{-\alpha} \quad \alpha = 0.41269 \equiv a/b$$

The quasi-contact exponent α has been measured by several groups in dimension D ranging from 2 to 13, all obtaining roughly $\alpha \approx 0.4$.

The most precise estimates being $\alpha = 0.41(3)$ for $D = 3$.

Without continuous replica symmetry we have

$$g(r) = Z\delta(r - 1) + O(1) \quad Z > 2D \quad \text{WRONG!!!}$$

Open problems.

- Can you explain all this in a simpler way, e.g. without replicas? Likely yes (GP and Zamponi in preparation).
- Can you prove that gives the exact result in one of MK_x models? I hope so, but it is not clear when (2 years or 20 years?)
- What happens in finite dimensions at jamming? Everything seems ok, but why?
- What happens to the Gardner transition in finite transition? It is still there or not?
- If yes, can we pinpoint the Gardner transition numerical simulations and in experiments?
- Which are the effects of the Gardner transition on the behaviour of quantum glasses at low temperature?

We must:

- Many other quantities have to be computed. In particular the spectrum of small oscillations.
- We should be able to do precise computation in the dynamics. (MCT like equations, but not MCT).
- We need to complete the extension of the results to finite dimensional models.
- Compare the prediction for the dynamical correlations with numerical simulations and with experiments.
- Compute systematically $1/d$ corrections.
- Understand the renormalization group approach in finite dimensions.

The MKK model

We consider a random regular lattice of coordination number z . On each site i we have a variable x_i that is a d -dimensional vector in box of side L and volume L^d . For each link we have a random shift s_{ik} .

We are interested the configurations such that for each link i, k

$$|x_i - x_k - s_{i,k}| > 1$$

In a first approximation forget the shifts s . In each box we have spheres of diameter 1.

Each sphere see the sphere on the nearby box. The density is

$$\rho = zL^{-d}$$

The SK limit is obtained when $z \rightarrow \infty$ at fixed ρ .

We are interested to compute the entropy as function of ρ . i.e. the volume in configuration space where all the bounds are satisfied.

$S(\rho) \rightarrow \infty$ when $\rho \rightarrow \rho_j$. The pressure ($-dS/d\rho$) goes to infinity at ρ_j .